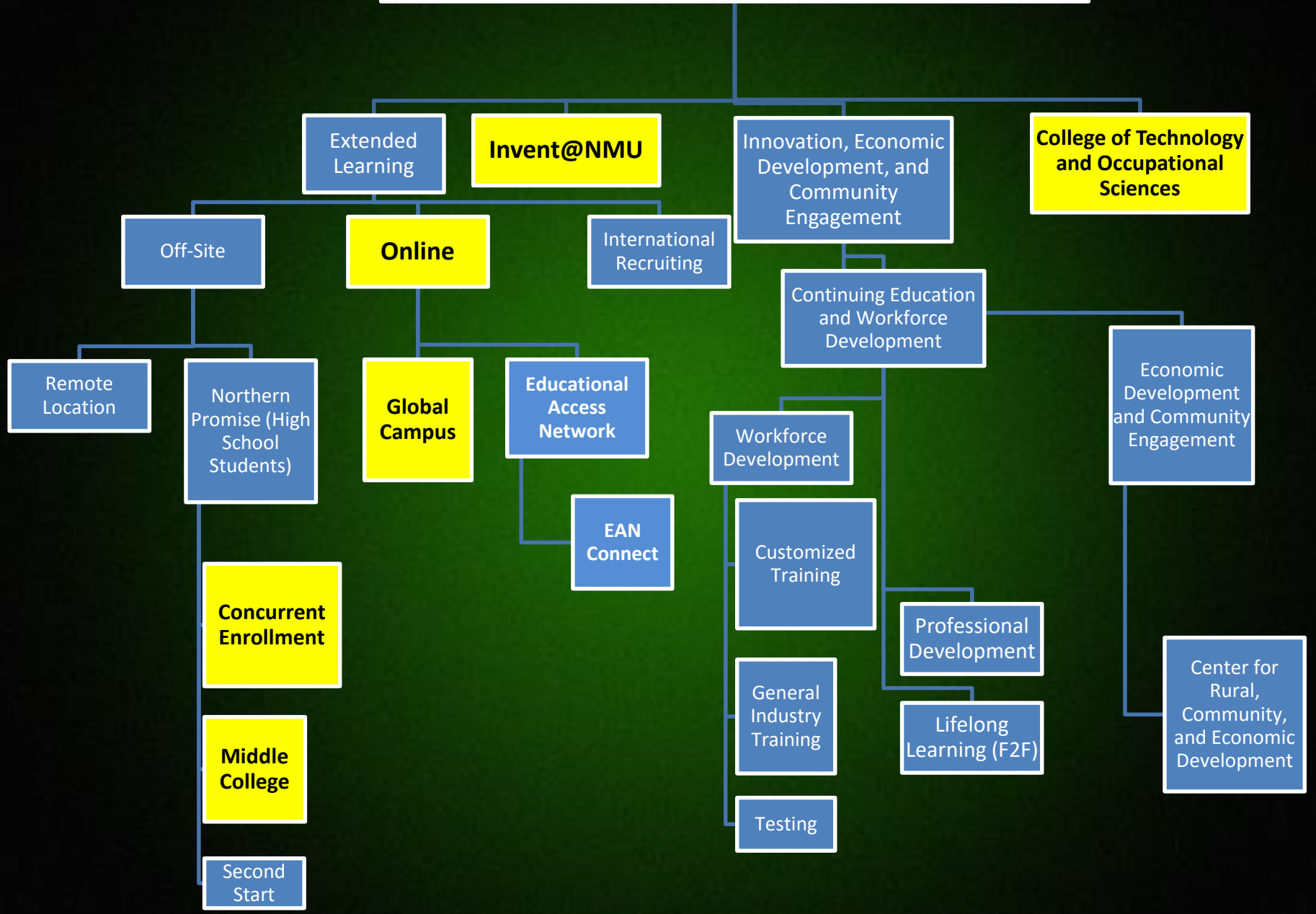


# Update from the Division of Extended Learning and Community Engagement

NMU Board of Trustees  
Academic Affairs Committee  
September 22, 2016

# Extended Learning and Community Engagement



# The Northern Promise

- Concurrent Enrollment

- Departments: Math, English (Art & Design & Computer Science new, Biology possible)
- Partners: Westwood, Escanaba, Kingsford, Forest Park, Gwinn, Norway
  - North Star, Marquette, Norway, Charlevoix/Beaver Island (should increase with EAN rollout)

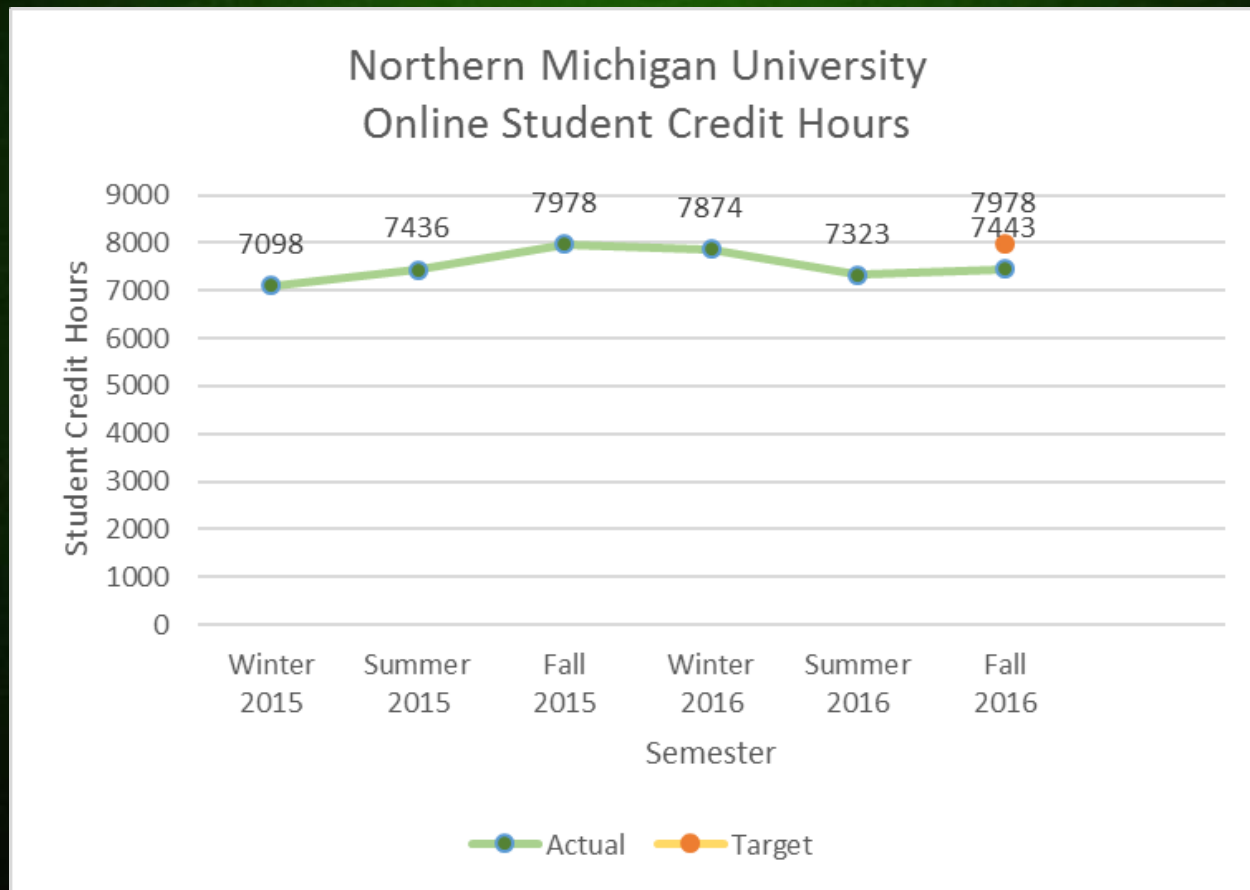
	Fall 2015	Winter 2016	Fall 2016 (projected)	Fall 2016 (actual)
Instructors	3	5	4	9
Subjects	2	2	2	2
Schools	2	4	4	6
Course Sections	3	6	6	12
<b>Enrollments</b>	<b>51</b>	<b>78</b>	<b>91</b>	<b>150</b>

- Middle College: 25 total students (15 left in Winter, 2016 cohort)
  - One student plans to complete an Associate degree

# Online

- Global Campus soft launch complete
  - Incorporated in Educational Access Initiative
  - Concierge
- Program development
  - OTF successful (full summer and fall)
  - Research Services
  - Applied Workforce Leadership, RN to BSN (F '07)
  - Construction Management
  - Hybrid MSW
- 2+2 articulations with community and technical colleges (NTC, FVTC, NWTC, Gogebic, Bay)
- Marketing targeted for online (CJ and Loss Prevention)
  - Online Program Management (OPM) partners

# Online Course Enrollment



# Invent@NMU

- Interim leader hired (Dave Puskala)
  - Working on product development
    - Providing input regarding financial viability
- Reinventing Invent
  - Looking at options for the next stage of Invent
  - Engaging stakeholders
    - Started with core NMU group
- Services to inventors unchanged