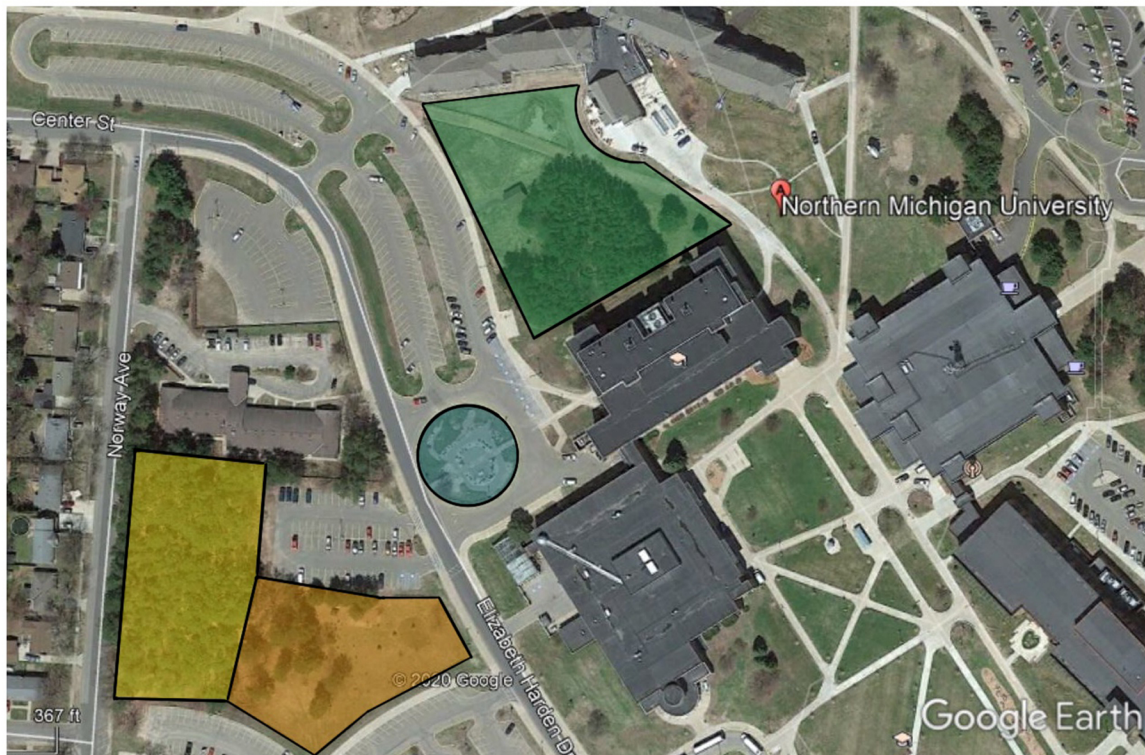


Chapter 2: Overview of the Outdoor Learning Area



The Native Plant Park: This area is an example of natural succession from grassland to forest and offers a beautiful pavilion with ample seating.

The GeoPark: This area offers amazing floral displays, regional geologic formations, and the perfect picnicking spot.

The EcoPark: This area is an example of important ecosystem services including stormwater mitigation, which helps prevent pollutants from reaching Lake Superior.

Whitman Woods: A red pine forest primarily used by the Center for Native American Studies for special events, including ceremonies at the fire ring. This area is not officially managed by the EEGS Department.

Chapter 3: Geopark Garden Bed Reference Maps

Section 1: Park Overview

2018 Aerial Image of Geopark



Section 1: Park Overview

2020 Aerial View Drawing of GeoPark with Updated Garden Beds and Labels



A Boulders

1 Garden Beds

1 Trees

Section 1: Park Overview

Aerial View Drawing of Potential
Future Developments to GeoPark

