

Demographic Trends

Presented by

Jason Nicholas, Dir. Institutional Research
and Analysis

November 11th, 2019





Health » Diet + Fitness | Living Well | Parenting + Family

Live TV

U.S. Edition +

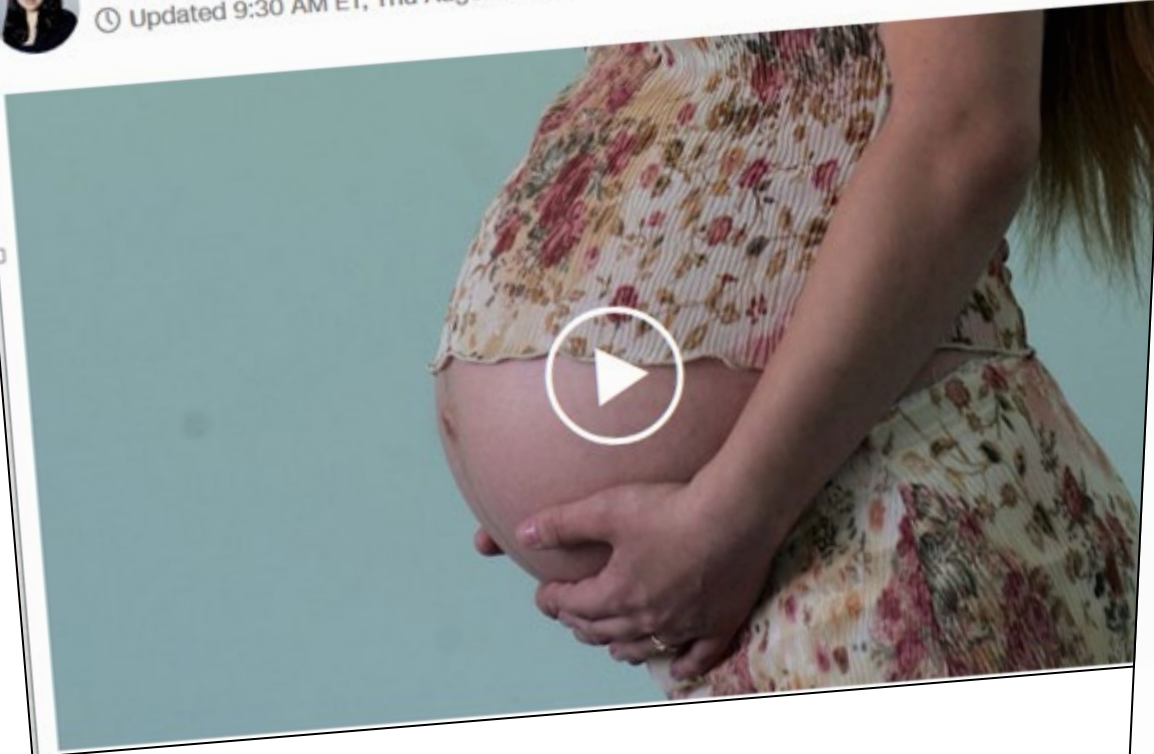


US fertility rate falls to lowest on record



By **Madison Park**, CNN

Updated 9:30 AM ET, Thu August 11, 2016



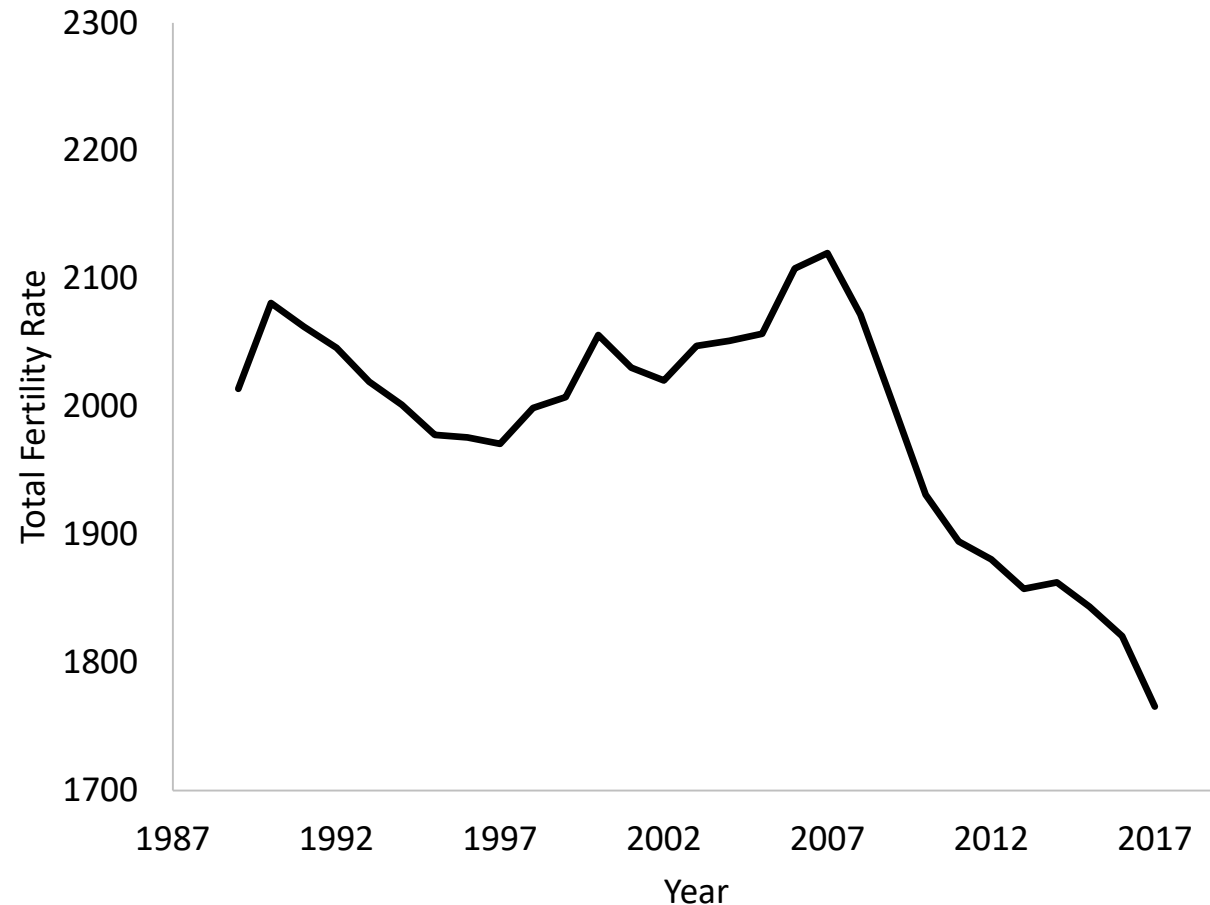
DOWN AND DOWN 3 MONTHS AGO

U.S. Fertility Rate Declines for Seventh Year Running



Reuters / Nacho Doce

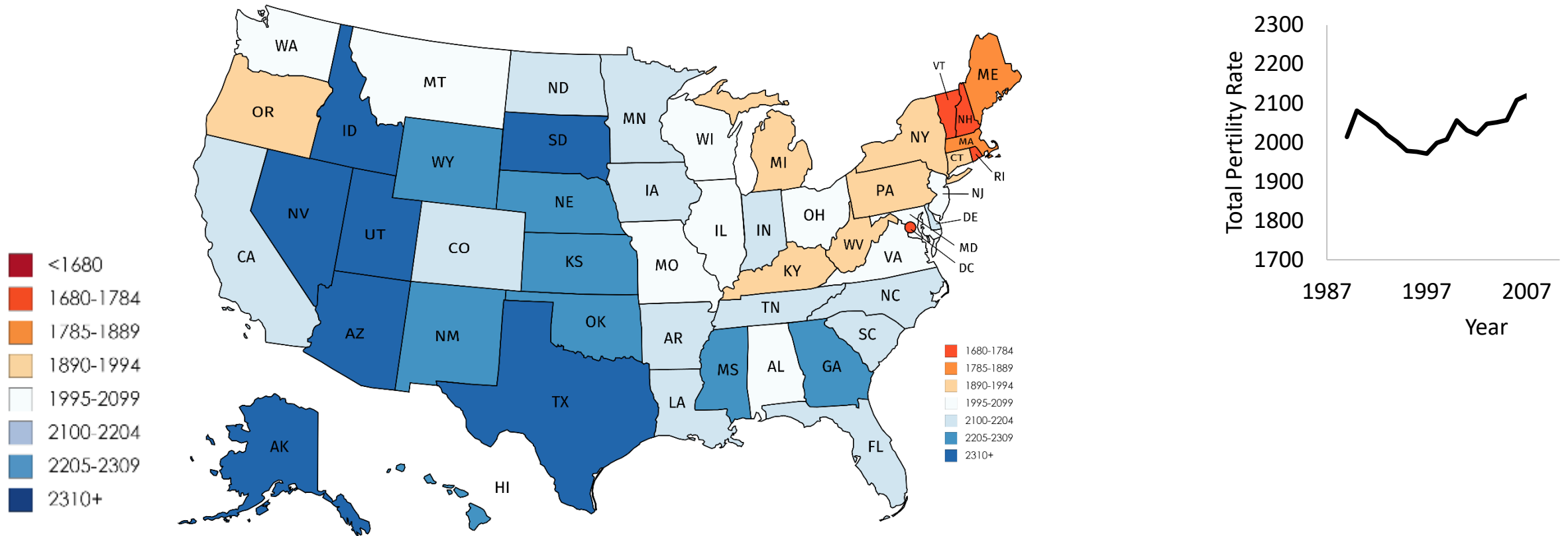
Total Fertility Rate Per 1000 Women



Source: National Vital Statistics Reports Vol. 67, no. 1

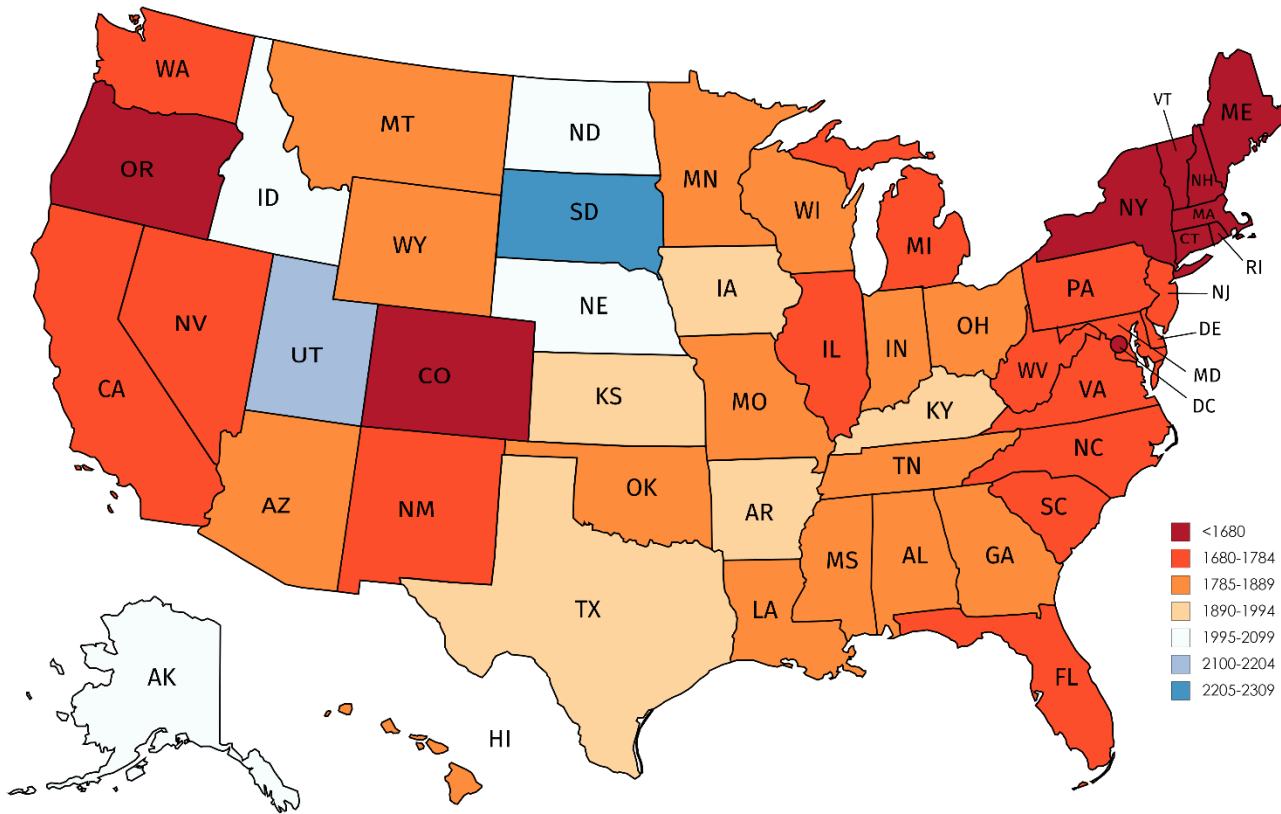


Total Fertility Rate per 1000 Women, 2007



Source: National Vital Statistics Reports Vol. 58, no. 24

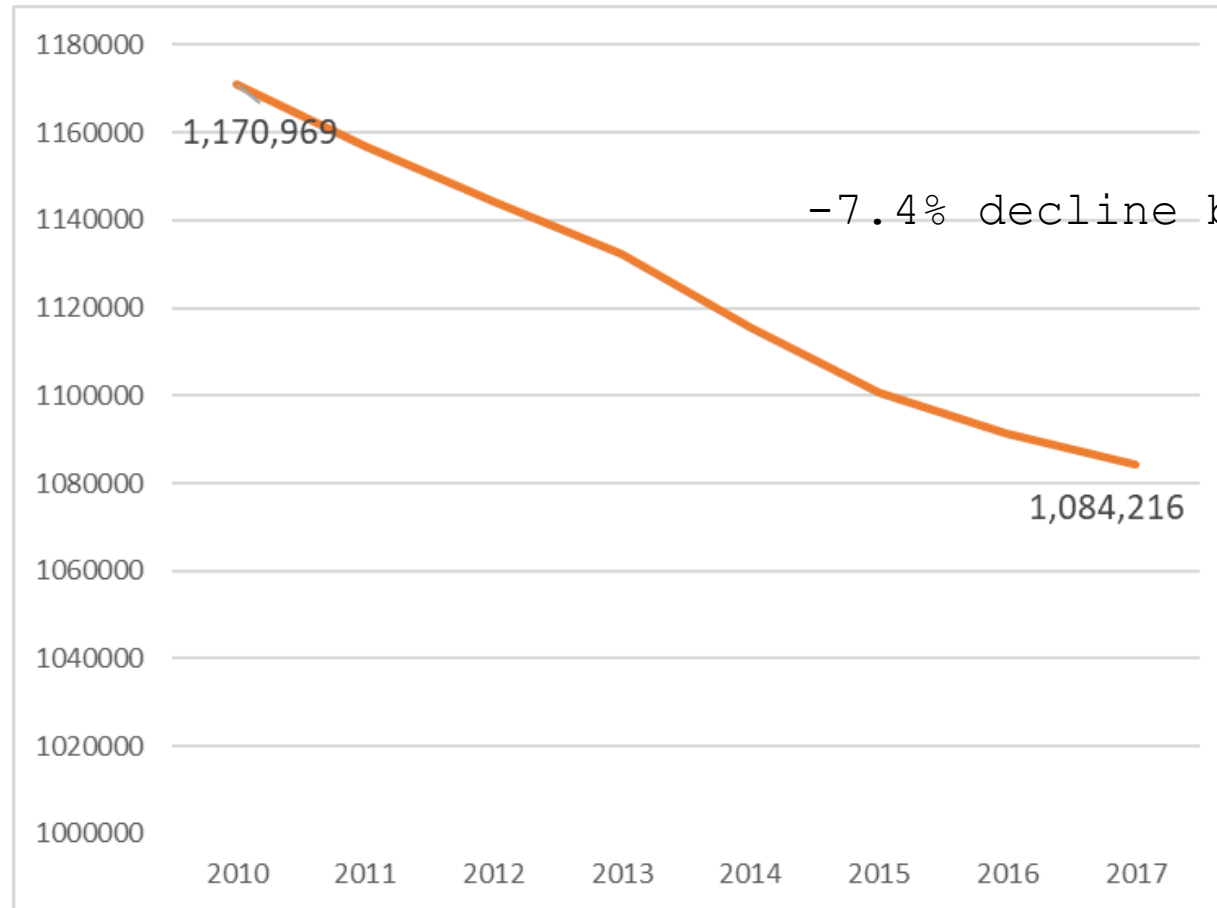
Total Fertility Rate per 1000 Women, 2017



Source: National Vital Statistics Reports Vol. 67, no. 8



Michigan Resident Pop. – Ages 5–13

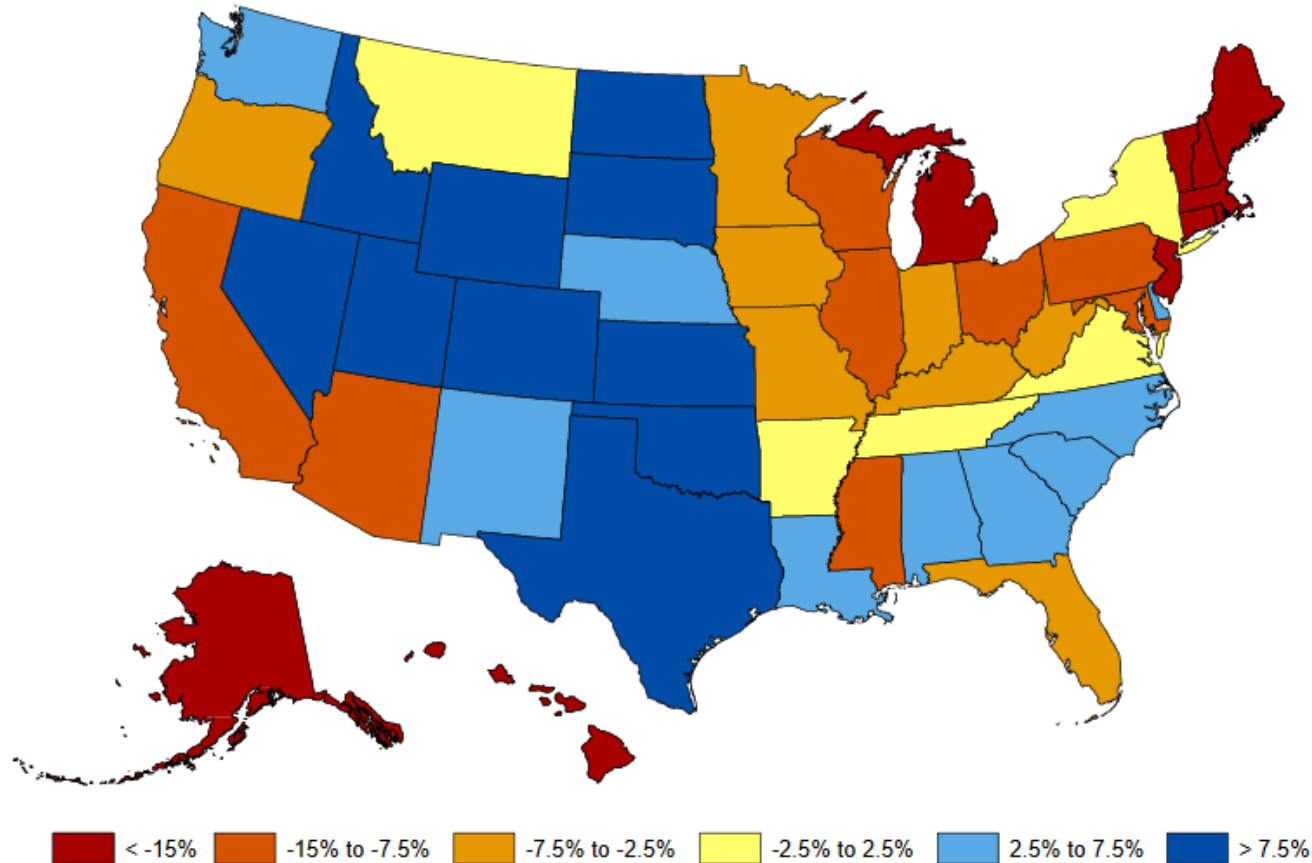


-7.4% decline between 2010 and 2017

Source: factfinder.census.gov



Projected Change in Numbers of High-School Graduates, 2012 to 2028



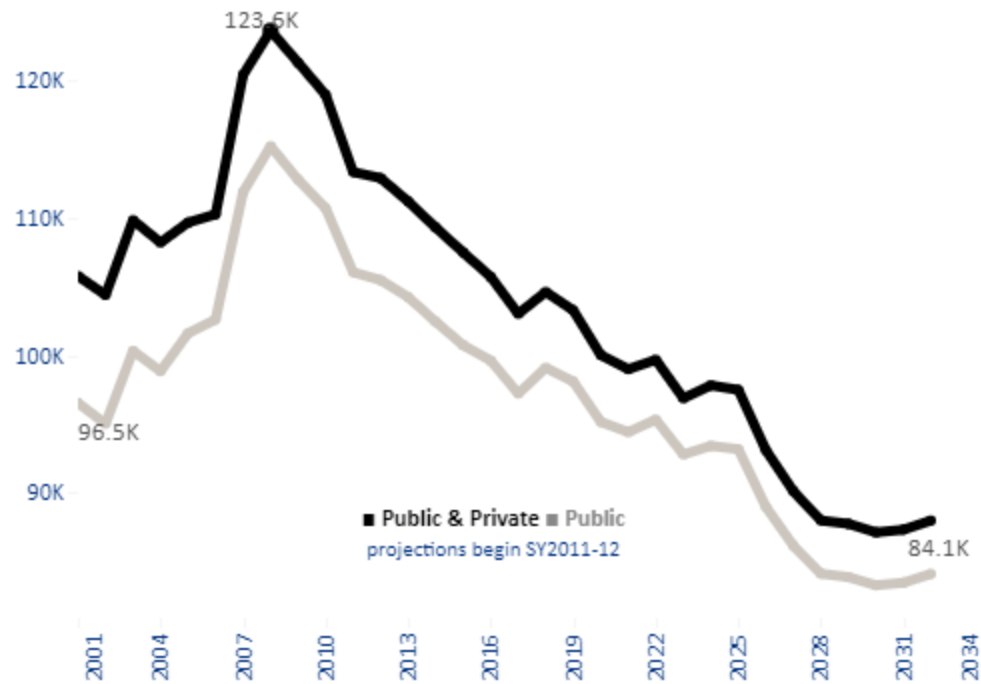
State Profile for Michigan

Michigan



KNOCKING AT THE COLLEGE DOOR

Overall High School Graduate Trends



- 8th highest producer of high school graduates with 98,500 high school graduates, on average, projected per year between school years 2011-12 and 2031-32.

- The total number of graduates in Michigan is not projected to increase after 2011-12, ending at 88,000 in 2031-32.

- Michigan generates about 13.9% of the Midwest's total, on average



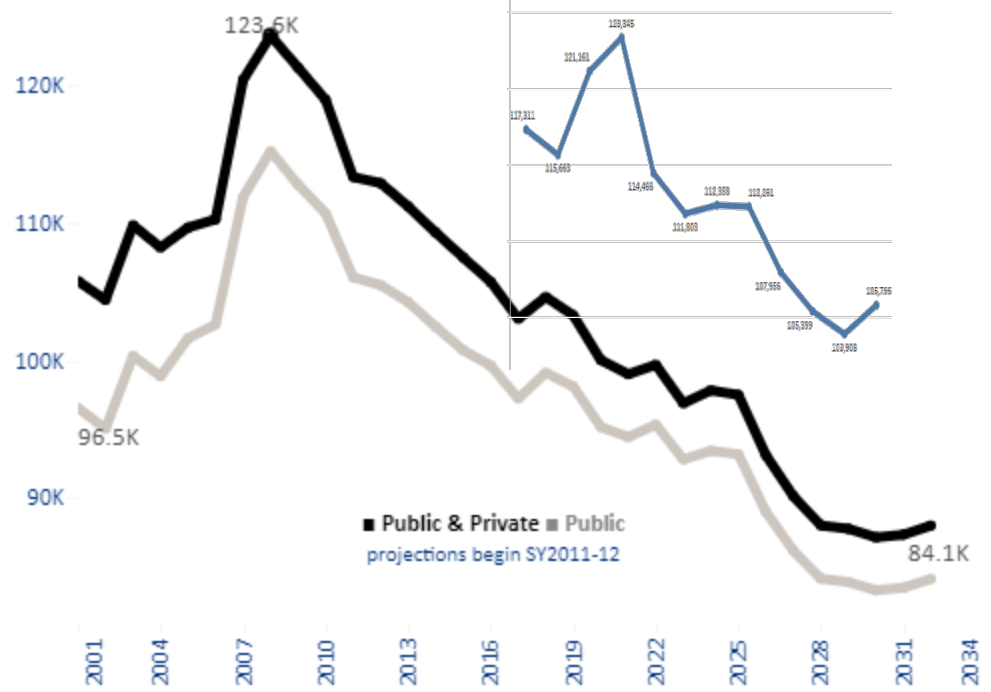
State Profile for Michigan

Michigan



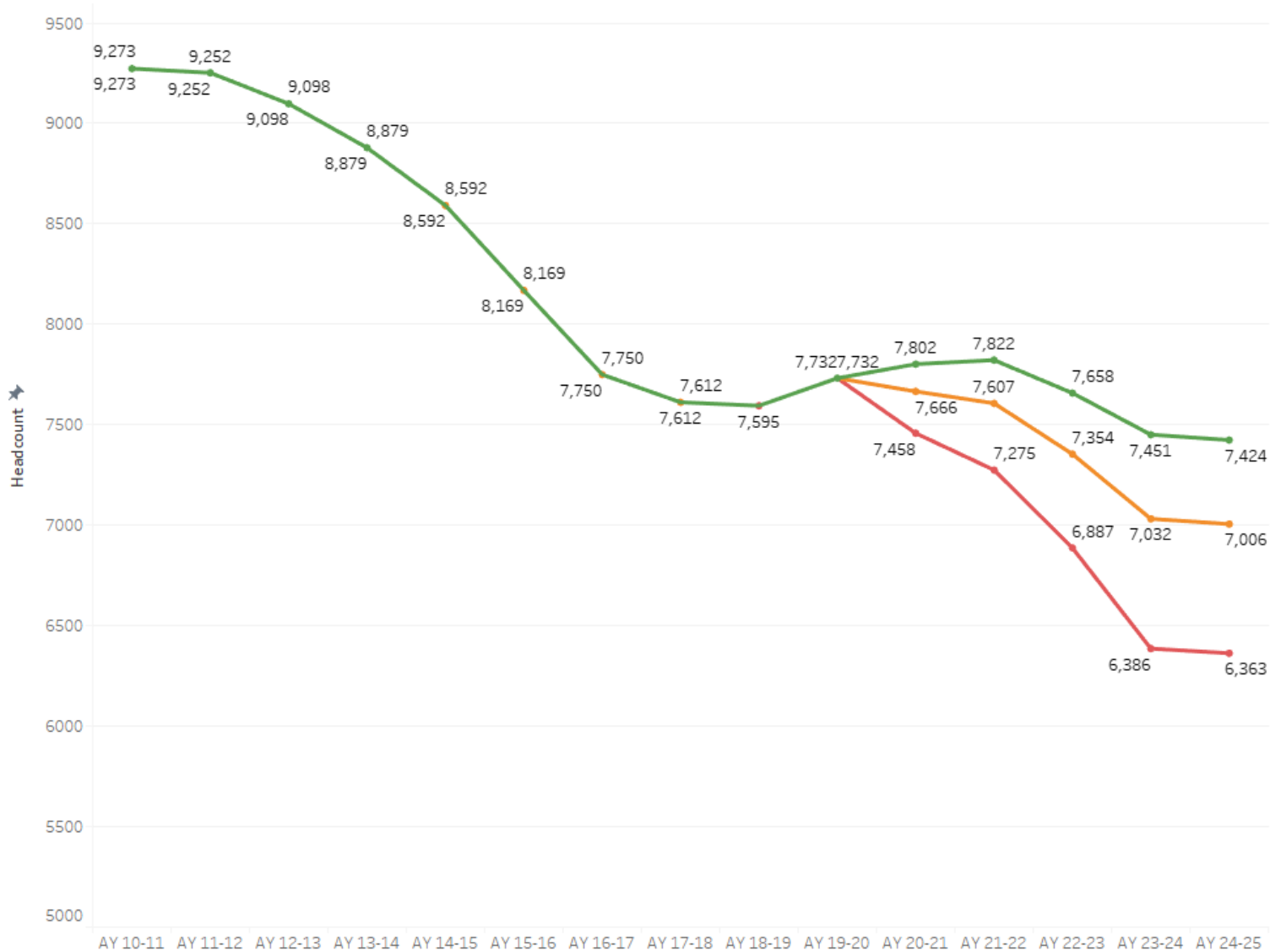
KNOCKING AT THE COLLEGE DOOR

Overall High School Graduate Trends



- 8th highest producer of high school graduates with 98,500 high school graduates, on average, projected per year between school years 2011-12 and 2031-32.
- The total number of graduates in Michigan is not projected to increase after 2011-12, ending at 88,000 in 2031-32.
- Michigan generates about 13.9% of the Midwest's total, on average





- Best Case: -3.2% (WICHE projections) new first time freshmen class; WICHE projections unaltered in out years
- Most Likely: -9% new first time freshmen class; WICHE projections unaltered in out years
- Worst Case: -18% new first time freshmen class; WICHE projections unaltered in out years
- Potential for an additional -10% decline by the end of the decade



Questions and/or Discussion

Jason Nicholas

Director of Institutional Research and Analysis

906-227-2379

janichol@nmu.edu



NORTHERN MICHIGAN UNIVERSITY