

Climate Change Impact us Differently

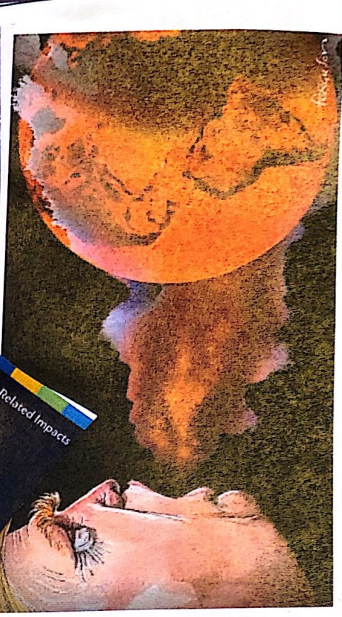
By Trey Reinhardt

October 29<sup>th</sup>, 2020

GC: 495 Zine

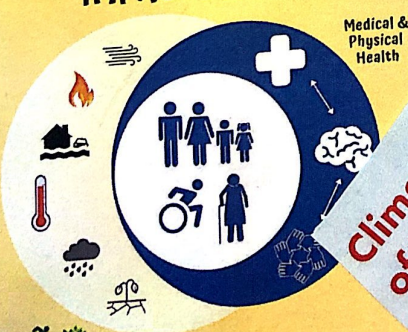
## **Table of Contents**

- 1.) Introduction page
- 2.) Displaced People
- 3.) Indigenous People
- 4.) Environmental Racism
- 5.) LGBTQ+ Community



SOME PEOPLE ARE MORE VULNERABLE

### HOW CLIMATE CHANGE IMPACTS HEALTH



Climate change is a matter of life and death.

3 out of 4 people living in poverty rely on agriculture & natural resources to survive.

Source: U.S. Global Change Research Program, 2016. The Impacts of Climate Change on Human Health in the United States: A Scientific Assessment.

EPIC #AccessibleEarth



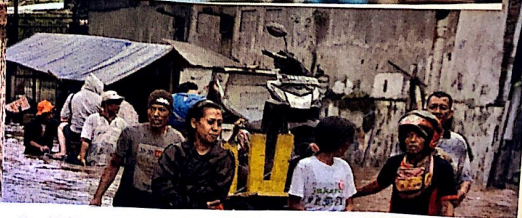
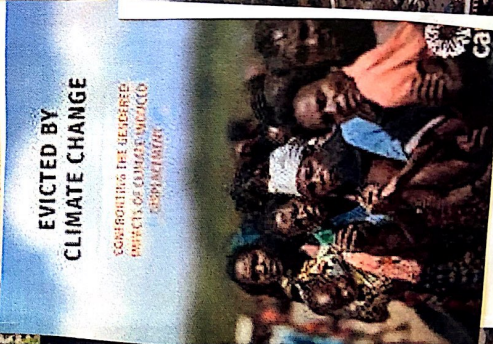


Worsening Climate leaves people without resources forcing them to move

80% of displaced people are women



18.8 million new disaster-related internal displacements recorded in 2017



Climate displaced people are not considered refugees under the 1951 Refugee Convention



"The traditional way of life of indigenous peoples has contributed little to climate change, yet they are the most adversely affected by it."

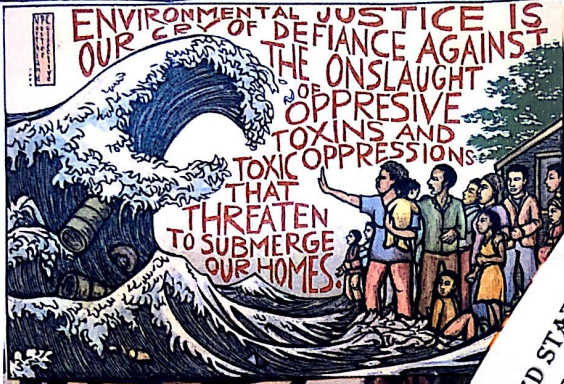
Clear Casentino

"Climate change exacerbates the difficulties already faced by indigenous communities including political and economic marginalization, loss of land and resources, human rights violations, discrimination and unemployment"

"The potential threat of climate change to indigenous peoples' very existence combined with various legal and institutional barriers, to climate change, makes climate change an issue of human rights and inequality to indigenous peoples" -UN





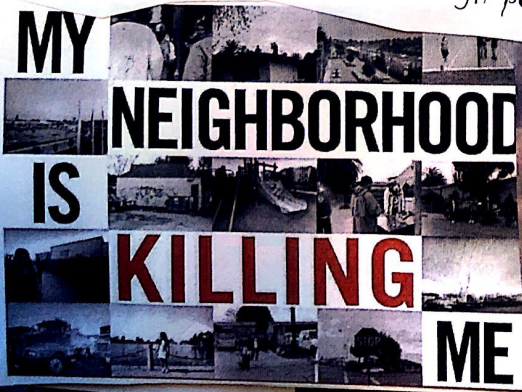


EVERYBODY'S GOT A RIGHT TO ENVIRONMENTAL PROTECTION

REDLINING IS A PRACTICE BY BANKS IN THE UNITED STATES TO KEEP BLACK COMMUNITIES SEGREGATED FROM WHITE COMMUNITIES AND THIS DIVERTED FUNDING FROM BLACK COMMUNITIES WHICH IN TURN WIDENED THE WEALTH GAP

MOST Polluted

Many of the Black communities are disproportionately targeted for high pollution industries



# Breathing While Black.

FIGHTING ENVIRONMENTAL RACISM IN THE SOUTH

THURSDAY, JUNE 25 / 6:30 - 8:00 PM EST  
REGISTER: BITLY/BREATHINGWHILEBLACK  
\$5 TO ATTEND

SCALAWAG

THE STREET

ALJAZEERA



"They are more likely to be living on lower incomes, to experience homelessness, and have limited access to healthcare. People who identify as LGBTQ+ as well as black, indigenous, and/or as people of color will likely be hit even harder."

JUSTICE FOR ALL

BREAK THE BINARY

"Trans folks in particular tend to face financial challenges that stem from discrimination and intolerance. It can be challenging to find workplaces that are safe and inclusive for those who are trans"

These ISSUES Put US More At Risk

"It is also an LGBTQ+ issue, with forty percent of homeless youth identifying as LGBTQ."

