

Northern Michigan University

MA161

Calculus I

Fall 2024

MA161 Syllabus

Class Meeting Hours

Monday/Tuesday/Wednesday/Thursday
8:00 – 8:50, Jamrich 3100

Instructor

Roxin Zhang (rzhang@nmu.edu)
Office: New Jamrich 2208

Office Hours

MWRF 11:00 – 11:50 am

Computer and Calculator Requirements

A computer with Internet access.

Calculator or desmos.com

The homework assignments and tests/quizzes will be online.

Install Maple (later in the semester).

MA161 Syllabus

Prerequisite (any one of the following)

A. A C- or better from MA115 Pre-Calculus; B. Recommendation from NMU Math Placement Test

Text Book

Calculus – WebAssign access to Single Variable Calculus with Early Transcendentals, 9Ed, by James Stewart.

Keep in mind that no hard copy textbook is required. The only required material is a WebAssign access that contains an e-text and all homework assignments. You will be able to access the WebAssign materials and the eText through Educat.

MA161 Syllabus

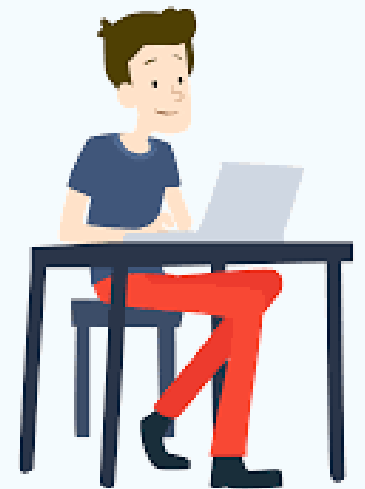
Homework

Homework will be assigned after each section through Cengage WebAssign. All assignments have due dates about a week after the assignment. Extension to due dates can be granted on individual basis.

The assignments are graded and will be computed into the final grades. Students can reattempt problems with discounted credits.

Attendance

The daily attendance for this class is required and will be calculated into grades. Students with excellent attendance will also earn extra credits.



MA161 Syllabus

Tests and the Final Exam

There will be about 6 bi-weekly one class period tests. The lowest test score will be dropped. The final exam is scheduled for two class periods (see NMU website for schedule).

All tests and the exam are open notes meaning you can view your lecture notes, PowerPoint slides, your past homework and quizzes. Helping each other during tests are not allowed.

However the tests are timed to one class time except the final. You need to review your homework and lectures for the tests since you will not have enough time to learn everything on the spot. **Do not search for answers on Internet during a test.**

Make up quizzes are allowed if communicated within one day or prior.

MA161 Syllabus

Grading

Homework assignments	28%
Tests (6 minus 1)	50%
Final exam	20%
Attendance	2%

The semester grades will be calculated as a weighted average.

Percent	95	90	85	80	75	70	65	60	55	50	45	-
Grade	A	A-	B+	B	B-	C+	C	C-	D+	D	D-	F

You can view your approximate score on Educat through the semester.

MA161 Syllabus

Main Contents

1. Limits and derivatives
2. Differentiation rules
3. Applications of differentiation
4. Integrals
5. Application of integration
6. Techniques of integration

MA161 Syllabus

If you have a need for disability-related accommodations or services, please inform the Coordinators of Disability Services in the Dean of Students Office at 2001 C. B. Hedgcock Building (227-1737 or disability@nmu.edu). Reasonable and effective accommodations and services will be provided to students if requests are made in a timely manner, with appropriate documentation, in accordance with federal, state, and University guidelines.

MA161 Syllabus

Learning Outcomes

By completing the course, students will learn the fundamental concepts in single variable calculus, including limits, derivatives and integrals; will understand the basic properties of limits and derivatives and their applications in natural and social sciences, will learn a set of integration techniques and be able to solve many application problems by applying these techniques.

Calculus contains mainly:

1. Limits – limiting values
2. Derivatives – rate of change
3. Integration – areas and volumes

Note: Course materials will be put on
educat.nmu.edu