

LOSS PREVENTION MANAGEMENT

ONLINE BACHELOR OF SCIENCE DEGREE

Transfer Guide for Northwestern Michigan College

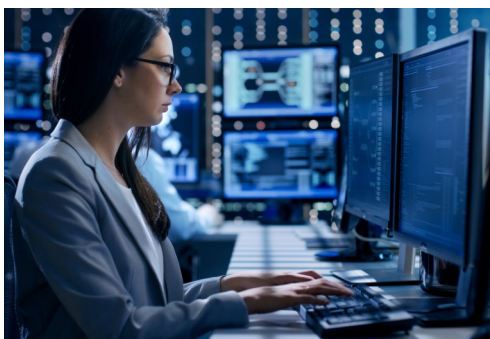
Northern Michigan University's B.S. in Loss Prevention Management will prepare specialists and managers on the concepts, series and best practices associated with the field. Students will learn basic theories and concepts, as well as organizational fundamentals including goals, missions, objectives, functions, operations, and roles. Classes will delve into management theory, investigate techniques and data analysis specific to loss prevention.

The focus of this program is to develop well-rounded students able to effectively work anywhere in the field. Courses are designed to give students applicable knowledge for any division of loss prevention as the enter the work force.

TIME WITH NMC

Students may earn any associate degree from NMC before enrolling in the online loss prevention management program at NMU and may transfer up to ninety (90) credit hours. Unless otherwise designated, a grade of at least a C- is required for courses to be considered for transfer to Northern.

Students may also concentrate in a particular subject area at NMC in order to use those courses toward a minor at NMU. An optional criminal justice minor is suggested to accompany the loss prevention management major.



TOTAL CREDITS REQUIRED FOR DEGREE			120
<i>Credits can be transferred to or completed with NMU</i>			
NMU COURSE	NMU COURSE TITLE	CREDIT HOURS	
CORE COURSES			24
LPM 101	Principles of Asset Protection	4	
LPM 190	Communications in Loss Prevention	4	
LPM 276	Loss Prevention Management and HR	4	
LPM 290	Retail Accounting and Inventory Control	4	
LPM 351	Loss Prevention Data Analysis	4	
LPM 390	Principles of Retail Investigations	4	
ELECTIVES (8 credits at 300+ level)			16
GENERAL EDUCATION			40
<i>Transfer credit suggestions on reverse of this sheet</i>			
GENERAL ELECTIVES			40

NMU GENERAL EDUCATION REQUIREMENTS

NMU COURSE	NMC COURSE	CREDIT	COMPLETED?
EFFECTIVE COMMUNICATION COMPONENT (two courses required)			
EN 111	ENG 111 English Composition	NMC credit	
EN 211	ENG 112 English Composition	NMC credit	
QUANTITATIVE REASONING AND ANALYSIS COMPONENT (one course required)			
DATA 109 MA 111	MTH 131 Probability & Statistics MTH 121 College Algebra	NMC credit	
SOCIAL RESPONSIBILITY COMPONENT (one course required)			
GC 164 HS 201	GEO 109 World Regional Geography HST 101 Western Civilization to 1500 AD	NMC credit	
INTEGRATIVE THINKING COMPONENT (one course required)			
PL 100 SP 110	PHL 101 Intro to Philosophy BUS 155 Interpersonal Communications	NMC credit	
HUMAN EXPRESSION COMPONENT (one course required)			
EN 112 HUME 1009H	ENG 241 World Mythology HUM 101 Intro to Humanities	NMC credit	
PERSPECTIVES IN SOCIETY COMPONENT (two courses required)			
CJ 110 PS 105 SO 101	CJ 101 Intro to Criminal Justice PLS 101 Intro to American Politics SOC 101 Intro to Sociology	NMC credit	
SCIENTIFIC INQUIRY COMPONENT (two courses required)			
BI 111 CH 105 GC 255	BIO 115 Cell, Plant & Ecosystem Biology CHM 101 Intro to Chemistry [&] CHM 101L ENV 111 Physical Geology	NMC credit	

NMU GRADUATION REQUIREMENTS

REQUIREMENT	NMU COURSE
English Competency	EN 111 & EN 211
Mathematics Competency	DATA 109, MA 111 or other approved course
2.0 Overall NMU & General Education GPA	2.0+ GPA
World Cultures	GC 164, HS 201 or other approved course
Laboratory Science Requirement	BI 111, CH 105, GC 255 or other approved course

This transfer guide reflects current evaluation of courses from Northwestern Michigan College (2022-2023 academic year). Changes occur occasionally. Final responsibility for verifying all transfer information lies with the student; a transfer guide is not intended to be a contract with NMU. Courses listed in this transfer guide represent a selection of courses at NMC that count for NMU requirements. There are other courses that can count for areas listed above. For academic advising assistance or to request an unofficial degree evaluation, contact the NMU Global Campus: (906) 227-1200 | online@nmu.edu