

LOSS PREVENTION MANAGEMENT

ONLINE BACHELOR OF SCIENCE DEGREE

Transfer Guide for Northeast Wisconsin Technical College

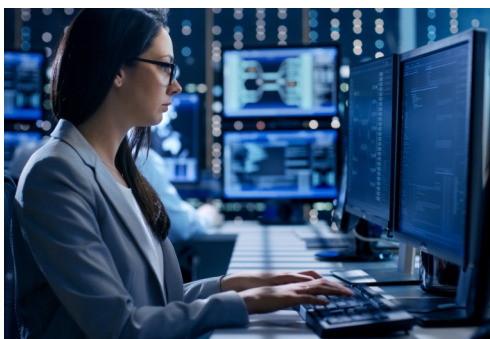
Northern Michigan University's B.S. in Loss Prevention Management will prepare specialists and managers on the concepts, series and best practices associated with the field. Students will learn basic theories and concepts, as well as organizational fundamentals including goals, missions, objectives, functions, operations, and roles. Classes will delve into management theory, investigate techniques and data analysis specific to loss prevention.

The focus of this program is to develop well-rounded students able to effectively work anywhere in the field. Courses are designed to give students applicable knowledge for any division of loss prevention as the enter the work force.

TIME WITH NWTC

Students may earn any associate degree from NWTC before enrolling in the online loss prevention management program at NMU and may transfer up to ninety (90) credit hours. Unless otherwise designated, a grade of at least a C- is required for courses to be considered for transfer to Northern.

Students may also concentrate in a particular subject area at NWTC in order to use those courses toward a minor at NMU. An optional criminal justice minor is suggested to accompany the loss prevention management major.



TOTAL CREDITS REQUIRED FOR DEGREE			120
<i>Credits can be transferred to or completed with NMU</i>			
NMU COURSE	NMU COURSE TITLE	CREDIT HOURS	
CORE COURSES			24
LPM 101	Principles of Asset Protection	4	
LPM 190	Communications in Loss Prevention	4	
LPM 276	Loss Prevention Management and HR	4	
LPM 290	Retail Accounting and Inventory Control	4	
LPM 351	Loss Prevention Data Analysis	4	
LPM 390	Principles of Retail Investigations	4	
ELECTIVES (8 credits at 300+ level)			16
GENERAL EDUCATION			40
<i>Transfer credit suggestions on reverse of this sheet</i>			
GENERAL ELECTIVES			40

NMU GENERAL EDUCATION REQUIREMENTS

NMU COURSE	NWTC COURSE	CREDIT	COMPLETED?
EFFECTIVE COMMUNICATION COMPONENT (two courses required)			
EN 111	801 136 English Composition 1	NWTC credit	
EN 211	801 223 English Composition 2	NWTC credit	
QUANTITATIVE REASONING AND ANALYSIS COMPONENT (one course required)			
MA 115	804 197 College Algebra & Trig w/Apps	NWTC credit	
SOCIAL RESPONSIBILITY COMPONENT (one course required)			
SOCR 1009S	809 172 Intro to Diversity Studies	NWTC credit	
INTEGRATIVE THINKING COMPONENT (one course required)			
INTT 1009 INTT 1009	806 112 Principles of Sustainability 480 101 Renewable Energy & Sustainability	NWTC credit	
HUMAN EXPRESSION COMPONENT (one course required)			
HUME 1009	801 191 Critical Thinking & Philosophy	NWTC credit	
PERSPECTIVES IN SOCIETY COMPONENT (two courses required)			
EC 101 PS 105 SO 101	809 195 Economics 809 122 Intro to American Government 809 196 Intro to Sociology	NWTC credit	
SCIENTIFIC INQUIRY COMPONENT (two courses required)			
CH 105 CH 109 PH 201	806 134 General Chemistry 806 186 Intro to Biochemistry 806 143 College Physics I	NWTC credit	

NMU GRADUATION REQUIREMENTS

REQUIREMENT	NMU COURSE
English Competency	EN 111 & EN 211
Mathematics Competency	MA 115, or other approved course
2.0 Overall NMU & General Education GPA	2.0+ GPA
World Cultures	See NMU bulletin for approved course
Laboratory Science Requirement	BI 100, CH 105, PH 201 or other approved course

This transfer guide reflects current evaluation of courses from Northeast Wisconsin Technical College (2022-2023 academic year). Changes occur occasionally. Final responsibility for verifying all transfer information lies with the student; a transfer guide is not intended to be a contract with NMU. Courses listed in this transfer guide represent a selection of courses at NWTC that count for NMU requirements. There are other courses that can count for areas listed above. For academic advising assistance or to request an unofficial degree evaluation, contact the NMU Global Campus: (906) 227-1200 | online@nmu.edu