

LOSS PREVENTION MANAGEMENT

ONLINE BACHELOR OF SCIENCE DEGREE

Transfer Guide for Northwestern Michigan College

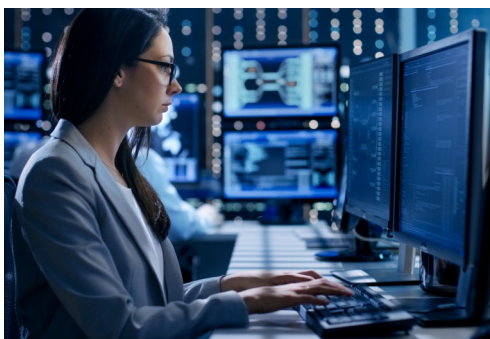
Northern Michigan University's B.S. in Loss Prevention Management will prepare specialists and managers on the concepts, series and best practices associated with the field. Students will learn basic theories and concepts, as well as organizational fundamentals including goals, missions, objectives, functions, operations, and roles. Classes will delve into management theory, investigate techniques and data analysis specific to loss prevention.

The focus of this program is to develop well-rounded students able to effectively work anywhere in the field. Courses are designed to give students applicable knowledge for any division of loss prevention as the enter the work force.

TIME WITH NMC

Students may earn any associate degree from NMC before enrolling in the online loss prevention management program at NMU and may transfer up to ninety (90) credit hours. Unless otherwise designated, a grade of at least a C- is required for courses to be considered for transfer to Northern.

Students may also concentrate in a particular subject area at NMC in order to use those courses toward a minor at NMU. An optional criminal justice minor is suggested to accompany the loss prevention management major.



TOTAL CREDITS REQUIRED FOR DEGREE

120

Credits can be transferred to or completed with NMU

NMU COURSE	NMU COURSE TITLE	CREDIT HOURS
CORE COURSES		24
LPM 101	Principles of Asset Protection	4
LPM 190	Communications in Loss Prevention	4
LPM 276	Loss Prevention Management and HR	4
LPM 290	Retail Accounting and Inventory Control	4
LPM 351	Loss Prevention Data Analysis	4
LPM 390	Principles of Retail Investigations	4
ELECTIVES (8 credits at 300+ level)		16
GENERAL EDUCATION		40
<i>Transfer credit suggestions on reverse of this sheet</i>		
GENERAL ELECTIVES		40

NMU GENERAL EDUCATION REQUIREMENTS

NMU COURSE OPTION	NMC COURSE EQUIVALENT
EFFECTIVE COMMUNICATION COMPONENT (two courses required)	
EN 111	ENG 111 English Composition
EN 211	ENG 112 English Composition
QUANTITATIVE REASONING AND ANALYSIS COMPONENT (one course required)	
DATA 109	MTH 131 Probability & Statistics
MA 100	MTH 111 Intermediate Algebra
MA 101	MTH 100 Quantitative Literacy
SOCIAL RESPONSIBILITY COMPONENT (one course required)	
GC 164	GEO 109 World Regional Geography
HS 201	HST 101 Western Civilization to 1500 AD
HS 202	HST 102 Western Civilization from 1500
INTEGRATIVE THINKING COMPONENT (one course required)	
PL 100	PHL 101 Intro to Philosophy
COM 110	BUS 155 Interpersonal Communications
HUMAN EXPRESSION COMPONENT (one course required)	
EN 112	ENG 241 World Mythology
EN 215	ENG 221 Creative Writing
PERSPECTIVES IN SOCIETY COMPONENT (two courses required)	
CJ 110 (Double counts in major)	CJ 101 Intro to Criminal Justice
PS 105	PLS 101 Intro to American Politics
PSY 101	PSY 101 Intro to Psychology
SO 101	SOC 101 Intro to Sociology
SCIENTIFIC INQUIRY COMPONENT (two courses required)	
BI 111	BIO 115 Cell, Plant & Ecosystem Biology
CH 105	CHM 101 Intro to Chemistry [&] CHM 101L
GC 255	ENV 111 Physical Geology
EC 202	ECO 201 Principles of Macroeconomics

NMU GRADUATION REQUIREMENTS

REQUIREMENT	NMU COURSE
English Competency	EN 111 & EN 211 (Grade C or higher)
Mathematics Competency (Grade C or higher)	DATA 109, MA 100, MA 101 or other approved course
2.0 Overall NMU & General Education GPA	2.0+ GPA
Global Citizenship	GC 164, HS 201 or other approved course
Laboratory Science Requirement	BI 111, CH 105, GC 255 or other approved course

This transfer guide reflects current evaluation of courses from Northwestern Michigan College (2025-2026 academic year). Changes occur occasionally. Final responsibility for verifying all transfer information lies with the student; a transfer guide is not intended to be a contract with NMU. Courses listed in this transfer guide represent a selection of courses at NMC that count for NMU requirements. There are other courses that can count for areas listed above. For academic advising assistance or to request an unofficial degree evaluation, contact the NMU Global Campus: (906) 227-1200 | online@nmu.edu