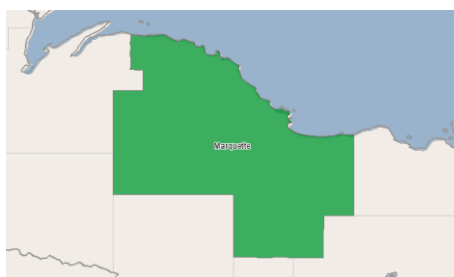


Northern Michigan University
Center for Economic Education and Entrepreneurship

Tawni Hunt Ferrarini, Ph.D.
Sam M. Cohodas Professor
ceee@nmu.edu

**2007-15 Marquette County:
Occupational, Industrial and Demographic Reports**



With special thanks to Michigan Works! The Job Force Board
2950 College Avenue
Escanaba, Michigan 49829
906.789.0558

Economic Modeling Specialists, Inc. www.economicmodeling.com

EMSI

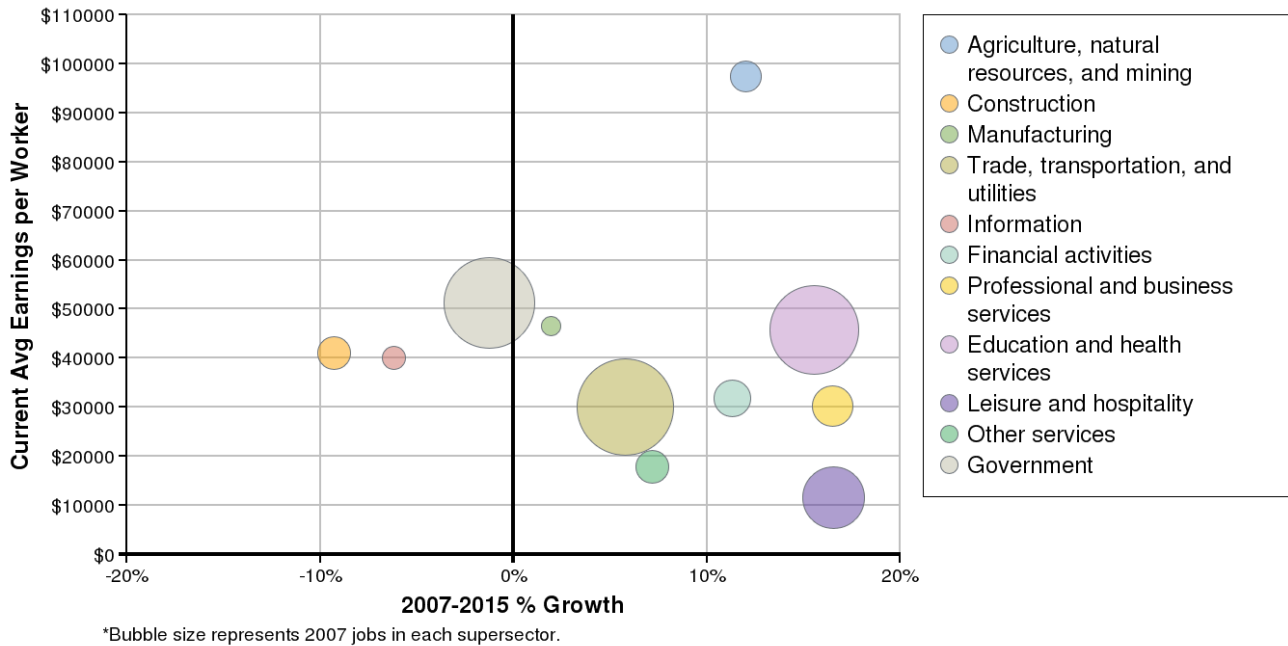
Region Info

Region: Marquette County

County Areas: Marquette, Michigan (26103)

Industry Size and Growth

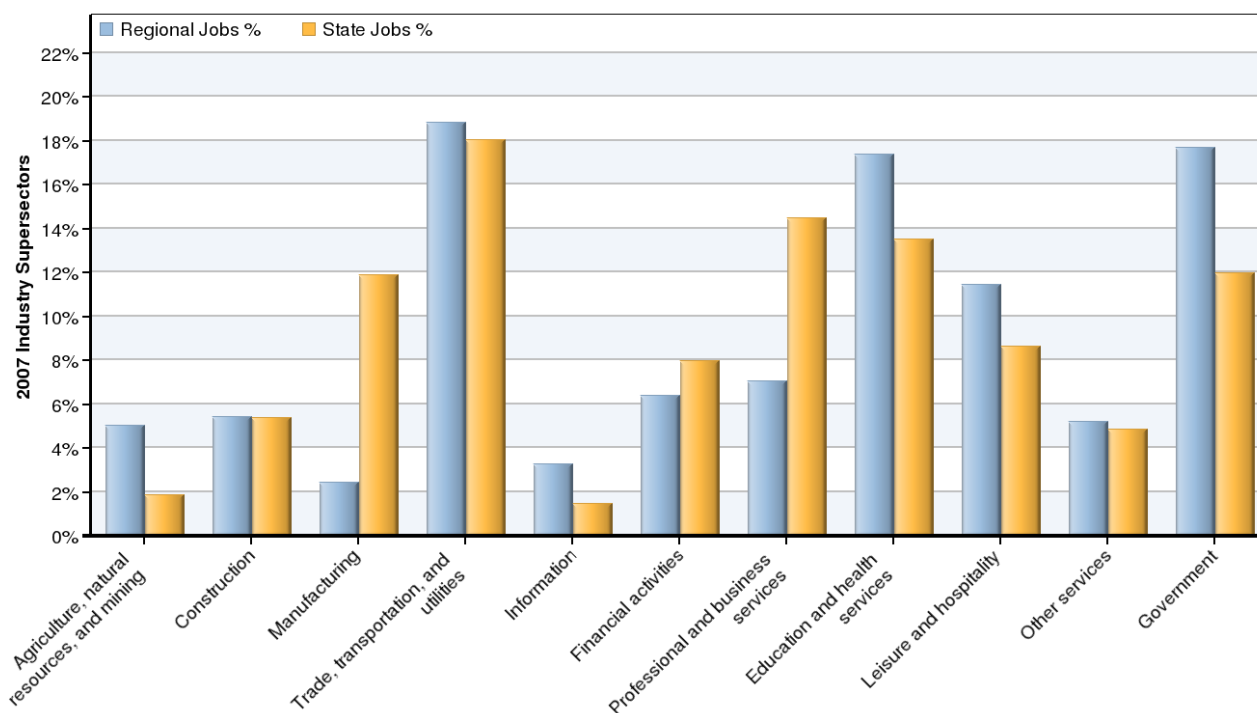
2007 - 2015 Size and Growth



Description	2007 Jobs	2015 Jobs	Growth	% Growth	Current EPW
Agriculture, natural resources, and mining	1,790	2,005	215	12%	\$97,330
Construction	1,939	1,759	-180	-9%	\$41,124
Manufacturing	870	887	17	2%	\$46,587
Trade, transportation, and utilities	6,740	7,131	392	6%	\$30,134
Information	1,162	1,090	-72	-6%	\$40,022
Financial activities	2,286	2,545	259	11%	\$31,743
Professional and business services	2,529	2,946	417	16%	\$30,348
Education and health services	6,222	7,189	967	16%	\$45,761
Leisure and hospitality	4,095	4,774	678	17%	\$11,657
Other services	1,863	1,997	134	7%	\$17,887
Government	6,331	6,251	-80	-1%	\$51,221
	35,826	38,573	2,747	8%	

Source: EMSI Complete Employment - 3rd Quarter 2009

2007 Industrial Makeup

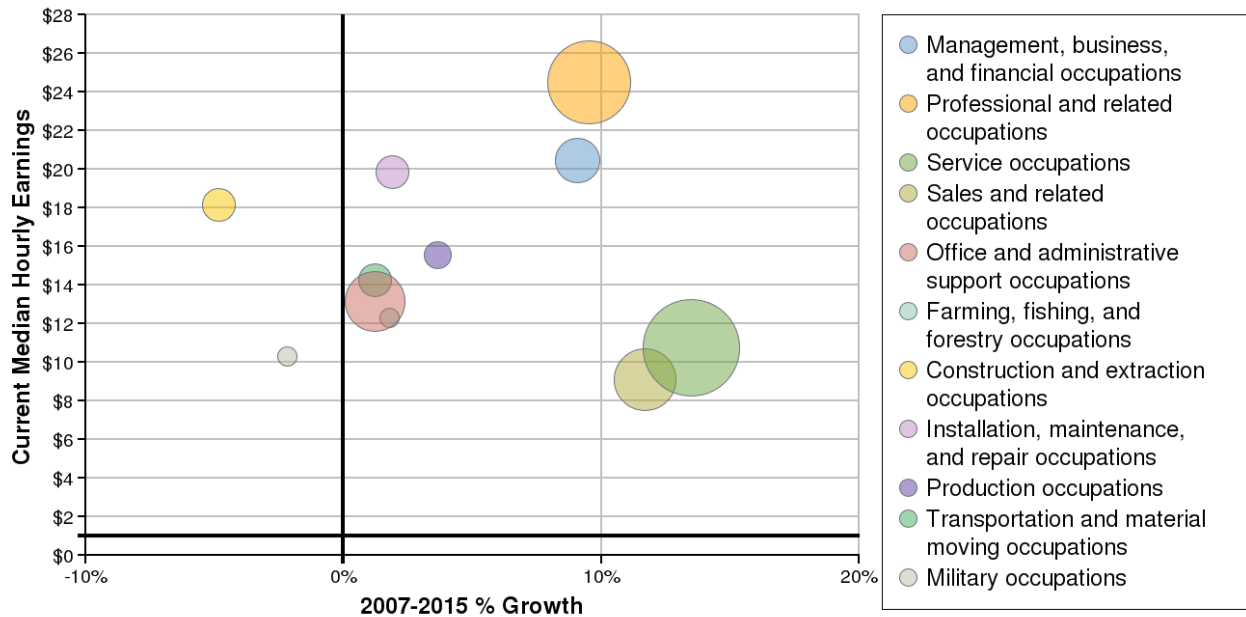


Description	2007 Regional Jobs	% Regional Jobs	2007 State Jobs	% State Jobs
Agriculture, natural resources, and mining	1,790	5%	100,632	1.9%
Construction	1,939	5.4%	289,280	5.4%
Manufacturing	870	2.4%	640,554	11.9%
Trade, transportation, and utilities	6,740	18.8%	972,281	18.1%
Information	1,162	3.2%	77,642	1.4%
Financial activities	2,286	6.4%	427,656	7.9%
Professional and business services	2,529	7.1%	778,928	14.5%
Education and health services	6,222	17.4%	727,088	13.5%
Leisure and hospitality	4,095	11.4%	464,634	8.6%
Other services	1,863	5.2%	260,573	4.8%
Government	6,331	17.7%	644,402	12%

Source: EMSI Complete Employment - 3rd Quarter 2009

Occupation Size and Growth

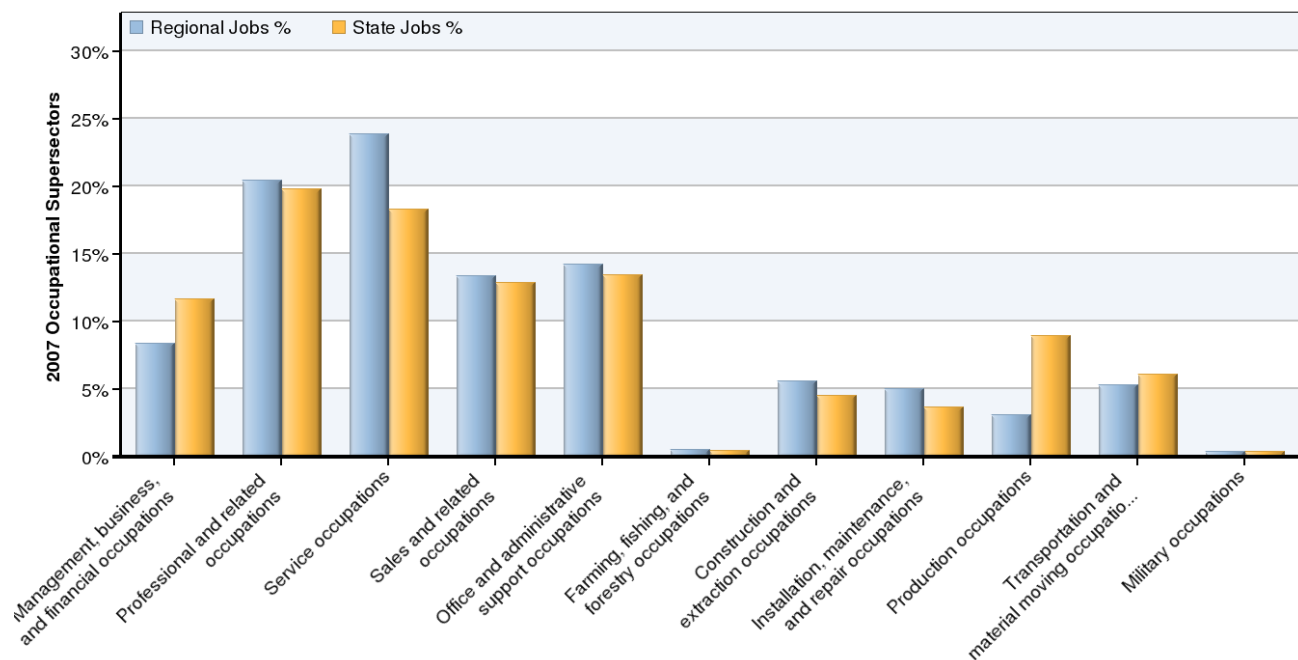
2007 - 2015 Size and Growth



Description	2007 Jobs	2015 Jobs	Growth	% Growth	Current Median Hourly Earnings
Management, business, and financial occupations	3,001	3,273	272	9%	\$20.45
Professional and related occupations	7,324	8,023	699	10%	\$24.52
Service occupations	8,541	9,694	1,152	13%	\$10.75
Sales and related occupations	4,779	5,338	560	12%	\$9.08
Office and administrative support occupations	5,096	5,159	63	1%	\$13.14
Farming, fishing, and forestry occupations	169	172	3	2%	\$12.31
Construction and extraction occupations	1,995	1,899	-96	-5%	\$18.16
Installation, maintenance, and repair occupations	1,800	1,834	34	2%	\$19.84
Production occupations	1,100	1,140	40	4%	\$15.56
Transportation and material moving occupations	1,881	1,904	23	1%	\$14.23
Military occupations	140	137	-3	-2%	\$10.31
	35,826	38,573	2,747	8%	

Source: EMSI Complete Employment - 3rd Quarter 2009

2007 Occupational Makeup

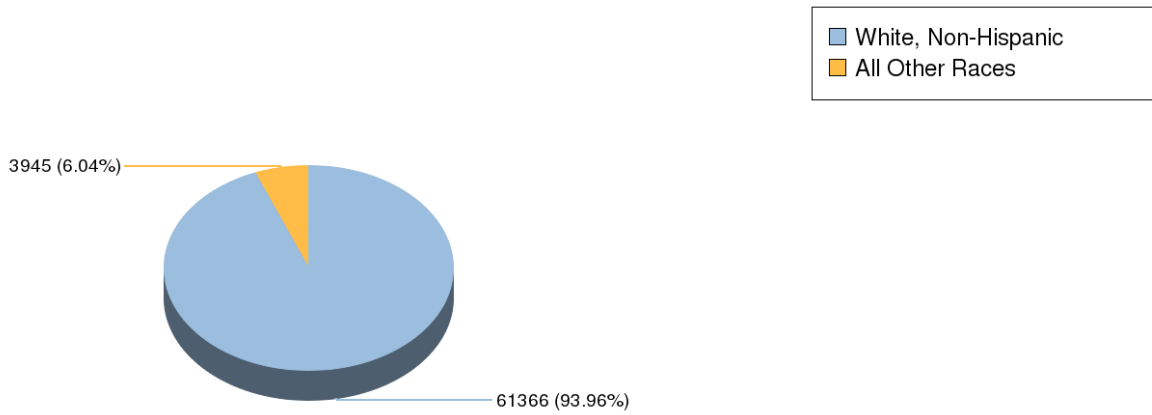


Description	2007 Regional Jobs	% Regional Jobs	2007 State Jobs	% State Jobs
Management, business, and financial occupations	3,001	8.4%	628,278	11.7%
Professional and related occupations	7,324	20.4%	1,065,129	19.8%
Service occupations	8,541	23.8%	986,109	18.3%
Sales and related occupations	4,779	13.3%	693,028	12.9%
Office and administrative support occupations	5,096	14.2%	724,839	13.5%
Farming, fishing, and forestry occupations	169	0.5%	24,122	0.4%
Construction and extraction occupations	1,995	5.6%	240,670	4.5%
Installation, maintenance, and repair occupations	1,800	5%	194,574	3.6%
Production occupations	1,100	3.1%	480,193	8.9%
Transportation and material moving occupations	1,881	5.3%	325,791	6.1%
Military occupations	140	0.4%	20,934	0.4%

Source: EMSI Complete Employment - 3rd Quarter 2009

Demographic Overview

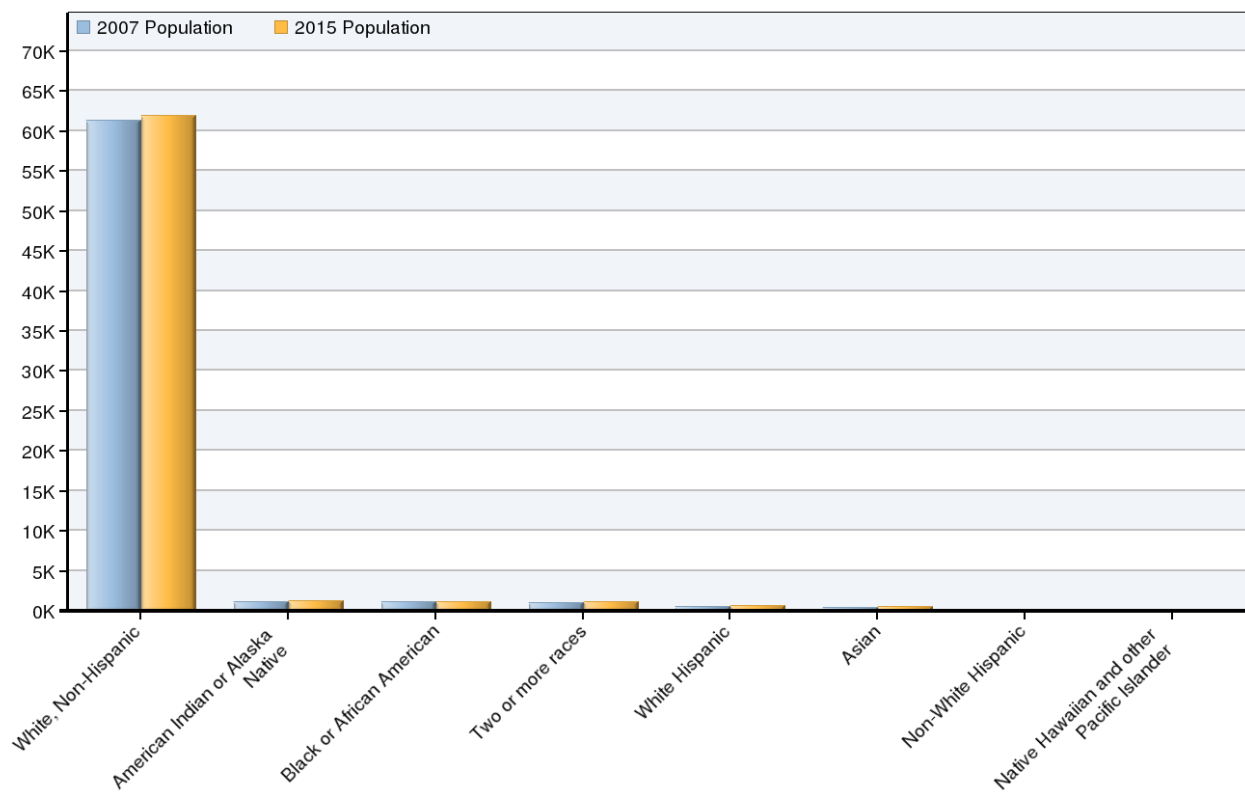
2007 Race/Ethnicity Breakdown



Ethnicity	2007 Population	% of Region
White, Non-Hispanic	61,366	93.96%
American Indian or Alaska Native	1,053	1.61%
Black or African American	1,034	1.58%
Two or more races	911	1.39%
White Hispanic	507	0.78%
Asian	378	0.58%
Non-White Hispanic	49	0.08%
Native Hawaiian and other Pacific Islander	13	0.02%

Source: EMSI Complete Employment - 3rd Quarter 2009

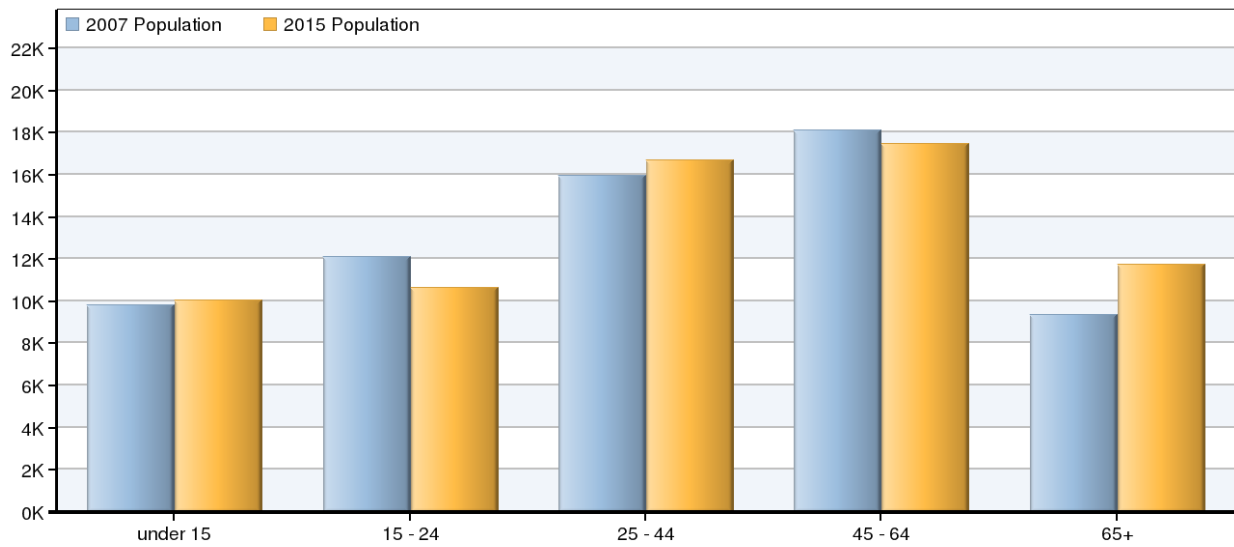
2007 - 2015 Race/Ethnicity Size and Growth



Race/Ethnicity	2007 Population	2015 Population	Change	% Change
White, Non-Hispanic	61,366	61,913	547	1%
American Indian or Alaska Native	1,053	1,168	115	11%
Black or African American	1,034	1,140	106	10%
Two or more races	911	1,132	221	24%
White Hispanic	507	644	137	27%
Asian	378	466	88	23%
Non-White Hispanic	49	67	18	37%
Native Hawaiian and other Pacific Islander	13	14	1	8%
	65,310	66,544	1,233	2%

Source: EMSI Complete Employment - 3rd Quarter 2009

2007 - 2015 Age Size and Growth



Age	2007 Population	2015 Population	Change	% Change
under 15	9,798	10,020	222	2%
15 - 24	12,085	10,652	-1,432	-12%
25 - 44	15,953	16,698	745	5%
45 - 64	18,123	17,440	-683	-4%
65+	9,351	11,734	2,383	25%
	65,310	66,544	1,235	2%

Source: EMSI Complete Employment - 3rd Quarter 2009

Data Sources and Calculations

Industry Data

In order to capture a complete picture of industry employment, EMSI basically combines covered employment data from Quarterly Census of Employment and Wages (QCEW) produced by the Department of Labor with total employment data in Regional Economic Information System (REIS) published by the Bureau of Economic Analysis (BEA), augmented with County Business Patterns (CBP) and Nonemployer Statistics (NES) published by the U.S. Census Bureau. Projections are based on the latest available EMSI industry data, 15-year past local trends in each industry, growth rates in statewide and (where available) sub-state area industry projections published by individual state agencies, and (in part) growth rates in national projections from the Bureau of Labor Statistics.

Occupation Data

Organizing regional employment information by occupation provides a workforce-oriented view of the regional economy. EMSI's occupation data are based on EMSI's industry data and regional staffing patterns taken from the Occupational Employment Statistics program (U.S. Bureau of Labor Statistics). Wage information is partially derived from the American Community Survey. The occupation-to-program (SOC-to-CIP) crosswalk is based on one from the U.S. Department of Education, with customizations by EMSI.

Demographic Data

The demographic data in this report is compiled from several sources using a specialized process. Sources include US Census Bureau annual estimates, birth and mortality rates from the US Health Department, and projected regional job growth.

State Data Sources

This report uses state data from the following agencies: Michigan Department of Labor and Economic Growth, Bureau of Labor Market Information and Strategic Initiatives.